

**street light**

Partner for Contact:  
Order No.:  
Company:  
Customer No.:

Date: 26.04.2022  
Operator: HESAM PROJECT



Operator HESAM PROJECT  
Telephone  
Fax  
e-Mail

## Table of contents

### street light

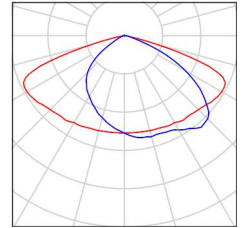
Project Cover	1
Table of contents	2
Luminaire parts list	3
<b>GOLNOOR 80W SetarehM</b>	
Luminaire Data Sheet	4
<b>Street 1</b>	
Planning data	5
Luminaire parts list	6
3D Rendering	7
False Colour Rendering	8
<b>Valuation Fields</b>	
<b>Valuation Field Roadway 1</b>	
Results overview	9
<b>Observer</b>	
<b>Observer 1</b>	
Isolines (L)	10
<b>Observer 2</b>	
Isolines (L)	11



Operator HESAM PROJECT  
Telephone  
Fax  
e-Mail

## street light / Luminaire parts list

9 Pieces GOLNOOR 80W SetarehM  
Article No.: 80W  
Luminous flux (Luminaire): 9802 lm  
Luminous flux (Lamps): 9802 lm  
Luminaire Wattage: 80.0 W  
Luminaire classification according to CIE: 100  
CIE flux code: 39 76 98 100 100  
Fitting: 96 x luxeon3030- SM (Correction Factor 1.000).

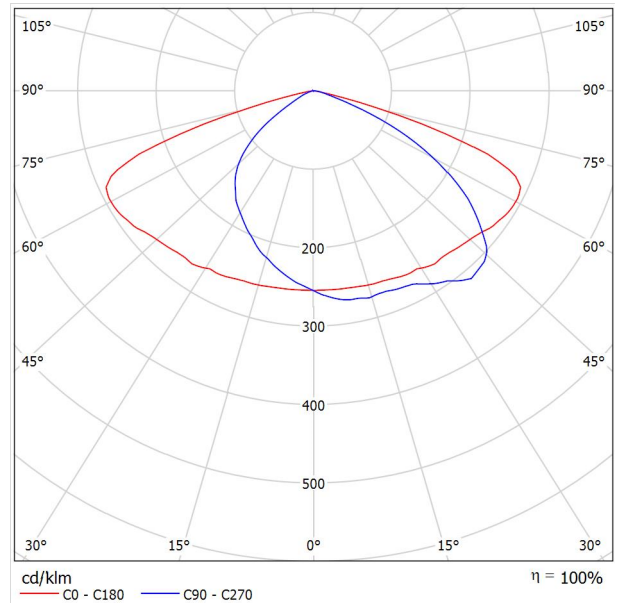




Operator HESAM PROJECT  
 Telephone  
 Fax  
 e-Mail

## GOLNOOR 80W SetarehM / Luminaire Data Sheet

Luminous emittance 1:



Luminaire classification according to CIE: 100  
 CIE flux code: 39 76 98 100 100

Setareh is a LED luminaire family With beautiful design which has been specially designed to fulfill the requirements of EN 13201: 2015. The use of high-tech lenses in the optical part of this luminaire has led to a decrease in glare and an increase in luminous efficacy. Weatherproof and corrosion resistant body has made Setareh an outstanding product among streetlights.

Angle adjustment from -15 to +15 degrees for horizontal pole entry.

Due to missing symmetry properties, no UGR table can be displayed for this luminaire.

Components:

•2 x



Operator HESAM PROJECT  
 Telephone  
 Fax  
 e-Mail

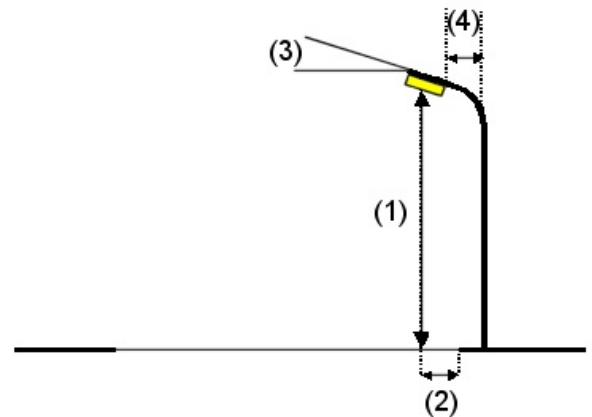
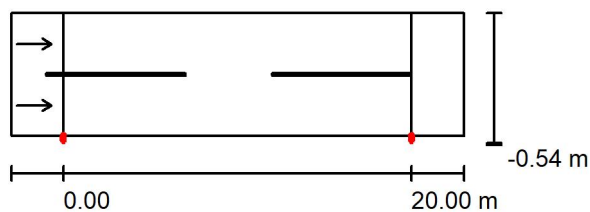
## Street 1 / Planning data

### Street Profile

Roadway 1 (Width: 7.000 m, Number of lanes: 2, tarmac: R3, q0: 0.070)

Maintenance factor: 0.80

### Luminaire Arrangements



Luminaire: GOLNOOR 80W SetarehM  
 Luminous flux (Luminaire): 9802 lm  
 Luminous flux (Lamps): 9802 lm  
 Luminaire Wattage: 80.0 W  
 Arrangement: Single row, bottom  
 Pole Distance: 20.000 m  
 Mounting Height (1): 8.979 m  
 Height: 9.197 m  
 Overhang (2): 0.000 m  
 Boom Angle (3): 20.0 °  
 Boom Length (4): 0.000 m

#### Maximum luminous intensities

at 70°: 427 cd/klm  
 at 80°: 373 cd/klm  
 at 90°: 54 cd/klm

Any direction forming the specified angle from the downward vertical, with the luminaire installed for use.

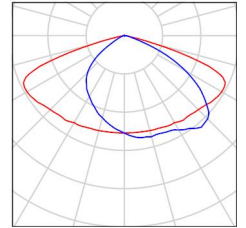
Arrangement complies with glare index class D.0.



Operator HESAM PROJECT  
Telephone  
Fax  
e-Mail

## Street 1 / Luminaire parts list

GOLNOOR 80W SetarehM  
Article No.: 80W  
Luminous flux (Luminaire): 9802 lm  
Luminous flux (Lamps): 9802 lm  
Luminaire Wattage: 80.0 W  
Luminaire classification according to CIE: 100  
CIE flux code: 39 76 98 100 100  
Fitting: 96 x luxeon3030- SM (Correction Factor 1.000).



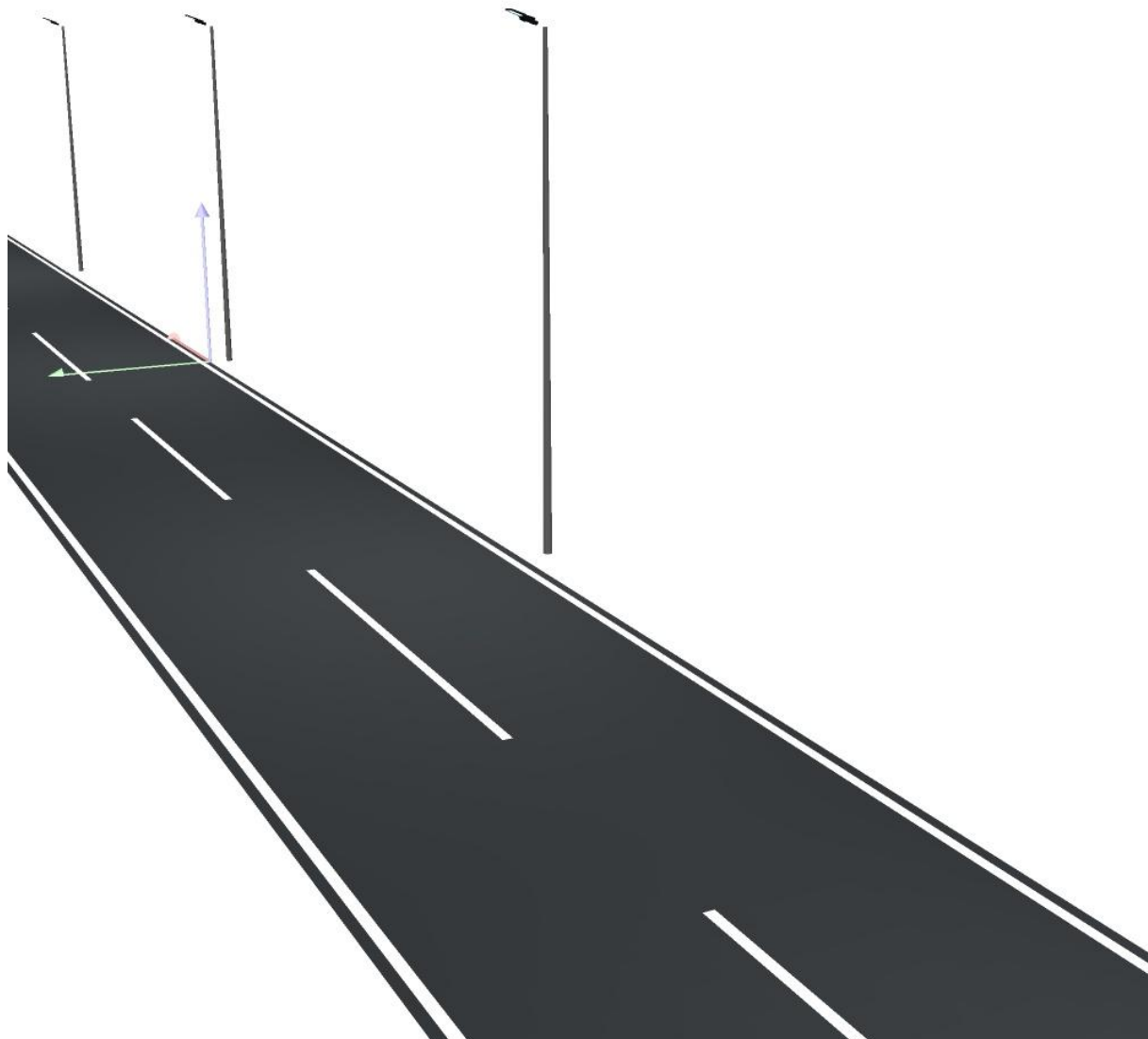
street light



**DIALux**  
26.04.2022

Operator HESAM PROJECT  
Telephone  
Fax  
e-Mail

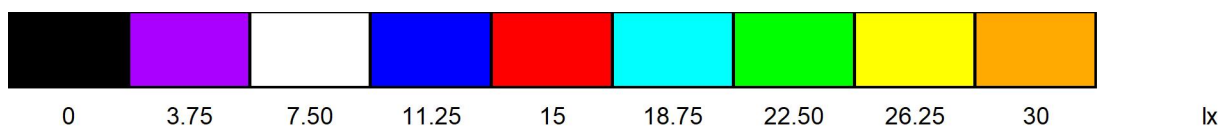
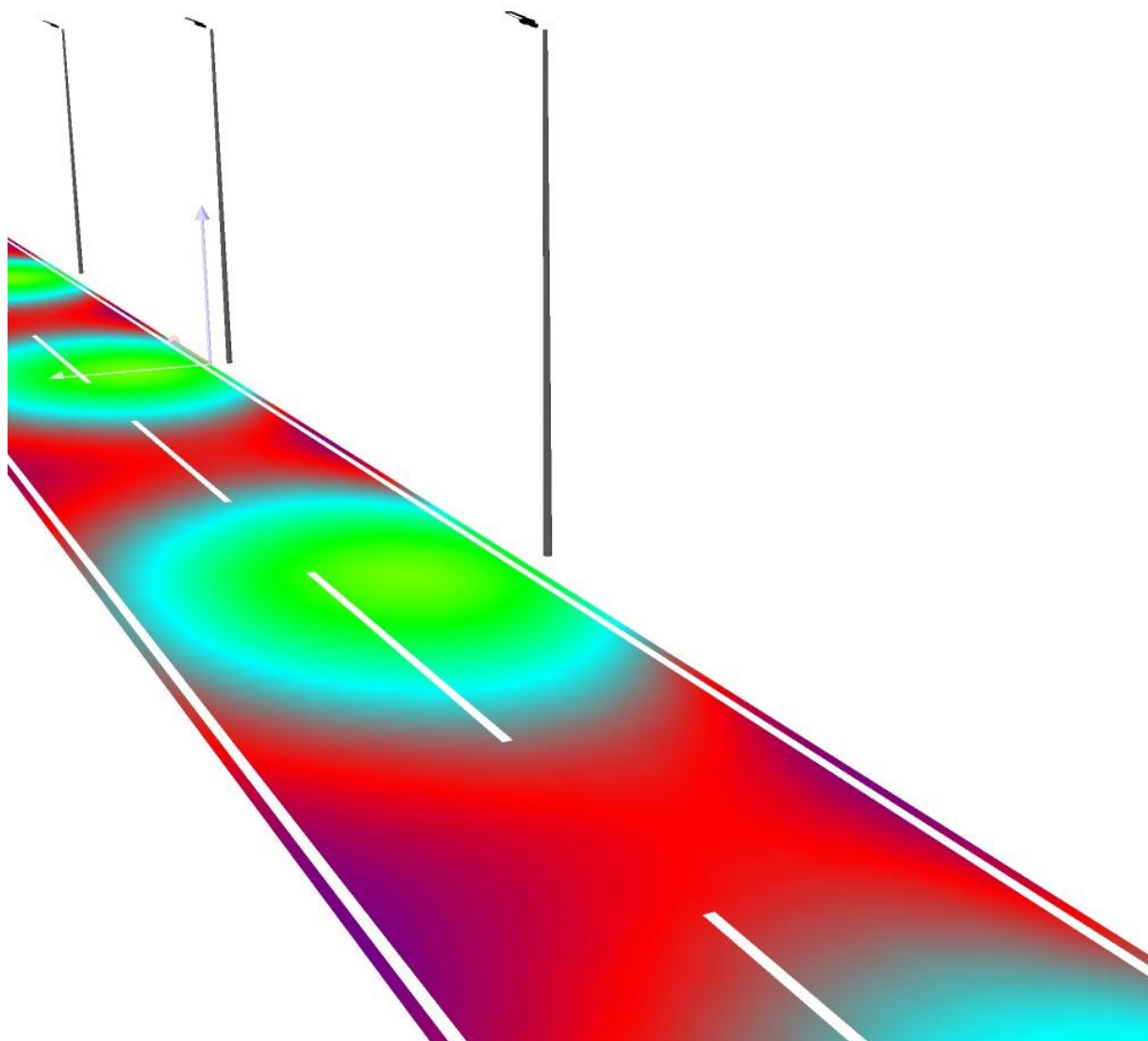
## Street 1 / 3D Rendering





Operator HESAM PROJECT  
Telephone  
Fax  
e-Mail

## Street 1 / False Colour Rendering

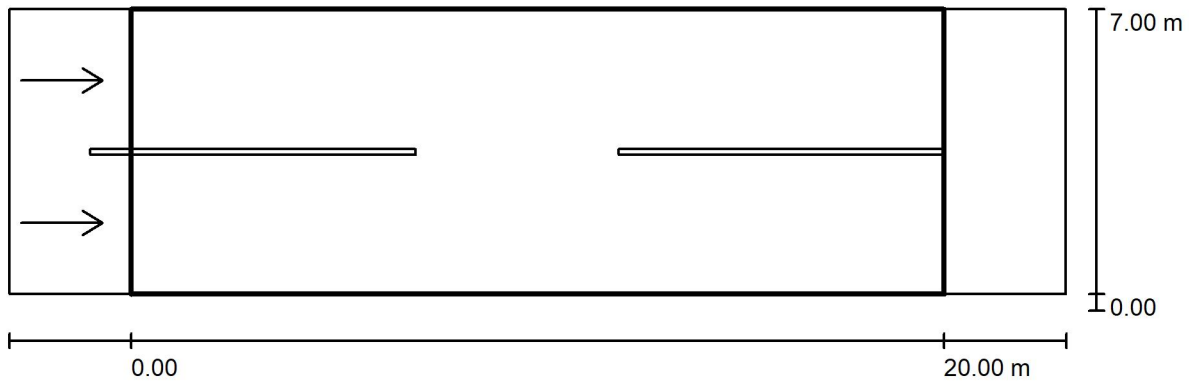






Operator HESAM PROJECT  
 Telephone  
 Fax  
 e-Mail

## Street 1 / Valuation Field Roadway 1 / Results overview



Maintenance factor: 0.80

Scale 1:186

Grid: 10 x 6 Points

Accompanying Street Elements: Roadway 1.

tarmac: R3, q0: 0.070

Selected Lighting Class: ME4a

(All lighting performance requirements are met.)

	$L_{av}$ [cd/m <sup>2</sup> ]	U0	UI	TI [%]	SR
Calculated values:	1.02	0.68	0.90	6	0.72
Required values according to class:	$\geq 0.75$	$\geq 0.40$	$\geq 0.60$	$\leq 15$	$\geq 0.50$
Fulfilled/Not fulfilled:	✓	✓	✓	✓	✓

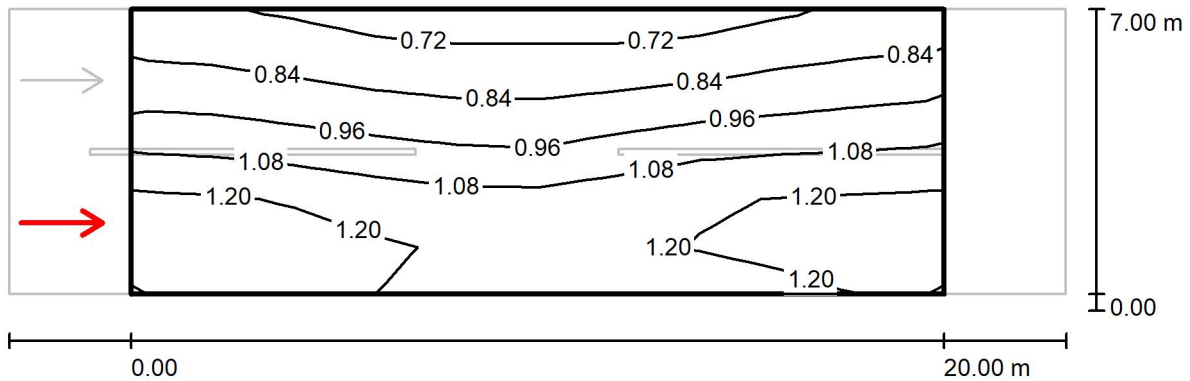
### Assigned Observer (2 Pieces):

No.	Observer	Position [m]	$L_{av}$ [cd/m <sup>2</sup> ]	U0	UI	TI [%]
1	Observer 1	(-60.000, 1.750, 1.500)	1.02	0.68	0.92	5
2	Observer 2	(-60.000, 5.250, 1.500)	1.10	0.69	0.90	6



Operator HESAM PROJECT  
 Telephone  
 Fax  
 e-Mail

### Street 1 / Valuation Field Roadway 1 / Observer 1 / Isolines (L)



Values in Candela/m<sup>2</sup>, Scale 1 : 186

Grid: 10 x 6 Points

Observer Position: (-60.000 m, 1.750 m, 1.500 m)

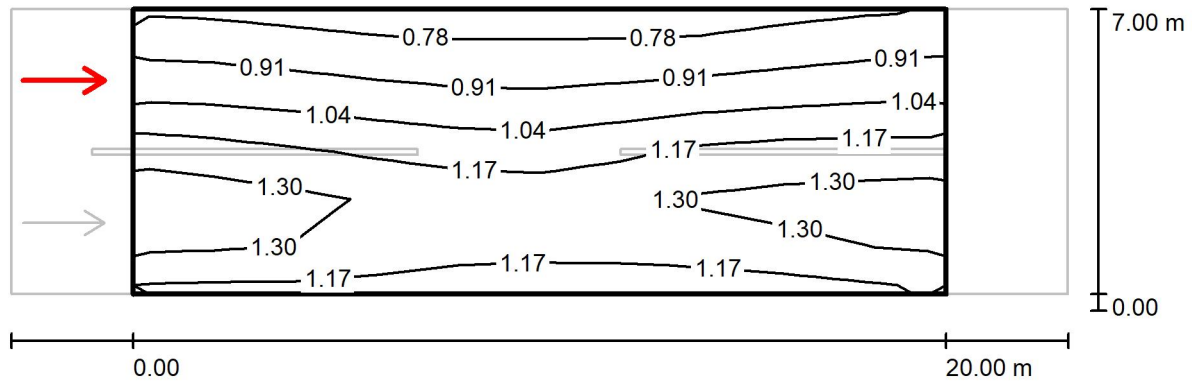
tarmac: R3, q0: 0.070

	$L_{av}$ [cd/m <sup>2</sup> ]	U0	UI	TI [%]
Calculated values:	1.02	0.68	0.92	5
Required values according to class ME4a:	≥ 0.75	≥ 0.40	≥ 0.60	≤ 15
Fulfilled/Not fulfilled:	✓	✓	✓	✓



Operator HESAM PROJECT  
 Telephone  
 Fax  
 e-Mail

### Street 1 / Valuation Field Roadway 1 / Observer 2 / Isolines (L)



Values in Candela/m<sup>2</sup>, Scale 1 : 186

Grid: 10 x 6 Points

Observer Position: (-60.000 m, 5.250 m, 1.500 m)

tarmac: R3, q0: 0.070

	$L_{av}$ [cd/m <sup>2</sup> ]	U0	UI	TI [%]
Calculated values:	1.10	0.69	0.90	6
Required values according to class ME4a:	≥ 0.75	≥ 0.40	≥ 0.60	≤ 15
Fulfilled/Not fulfilled:	✓	✓	✓	✓